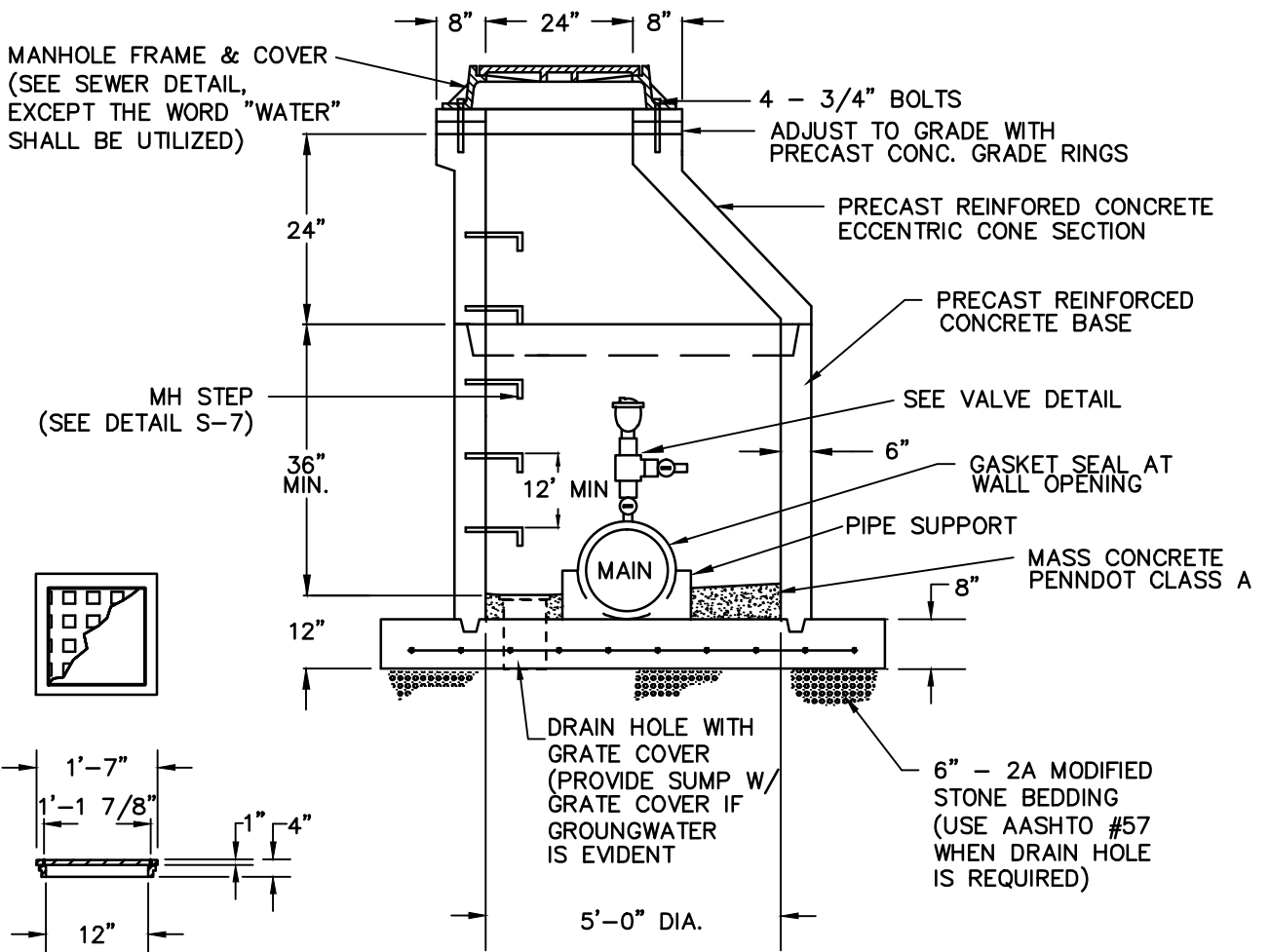


VALVE DETAIL

NOTES:

1. MANHOLE CONSTRUCTION TO CONFORM TO ASTM C-478 CONCRETE COMPRESSIVE STRENGTH TO BE 4000 PSI
2. MANHOLE TO HAVE EXTERIOR COATED WITH TWO COATS OF COAL TAR EPOXY, KOPPERS 300-M OR EQUAL.
3. INSTALL DOUBLE RING PREFORMED PLASTIC SEALING COMPOUND BETWEEN ALL SECTIONS AND UNDER FRAME.
4. MANHOLE FRAME SHALL BE BOLTED TO THE CONE SECTION WITH 4-3/4" DIA. S.S. BOLTS WITH WASHERS AND NUTS. BOLTS TO BE 90° ON A 33" DIA BOLT CIRCLE.



SUMP FRAME & COVER

* IN AREA OF SUBSTANTIAL GROUND WATER THE ENGINEER MAY CHOOSE TO SEAL THE SUMP HOLE WITH CONCRETE AND ELIMINATE THE GRATE COVER.

HORSHAM WATER & SEWER AUTHORITY

DETAIL W21

AIR RELEASE CHAMBER

DATE: MARCH 23, 2015

SCALE: NOT TO SCALE